

Nova International, Inc.

Modular Tile
&
Broadloom

*Nova's Recommended Carpet
For Diplomatic Agencies*

2009

Shown above is Embody Bittersweet Chic

Good Value Office Carpet Carpet Tile + Broadloom



Sparkling Bliss



Divine Flannel



Sweet Spot



Mystic Meadow



Bittersweet Chic



Sultry Nights



High performance carpet
with an ecologically
sound foundation.

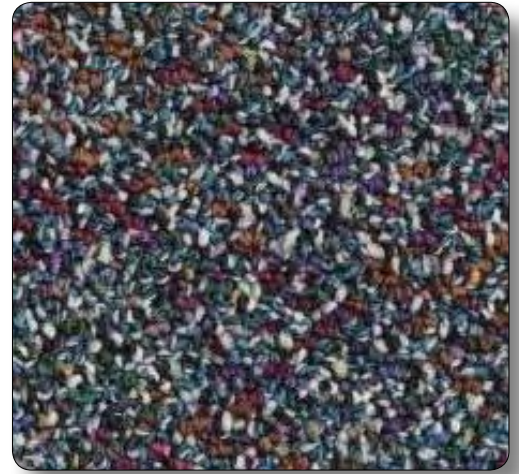
- Green Label
Plus certified
- Off-gas free
- PVC-free
- Soil protected

The following samples are for illustrative purposes only. Please request a swatch for accurate color rendition. The Embody Collection is available in Broadloom and Modular tile.

High Performance Office Carpet Carpet Tile + Broadloom



Gemini



Jupiter



Moonlight



Orbit



Shooting Star

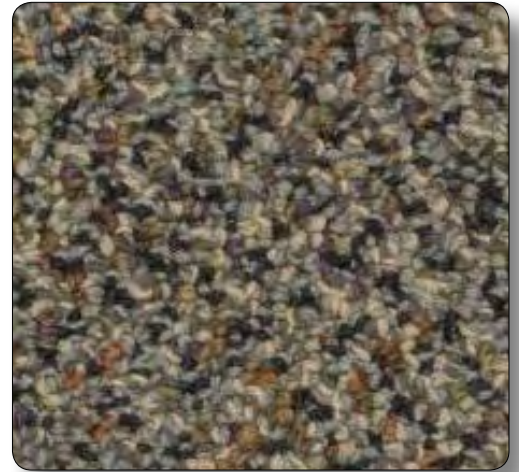


Asteroid

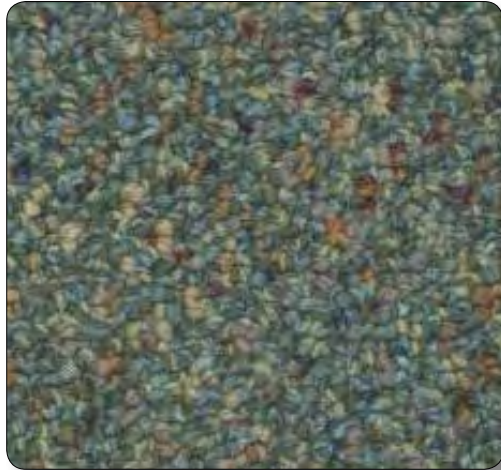
High Performance Office Carpet Carpet Tile + Broadloom



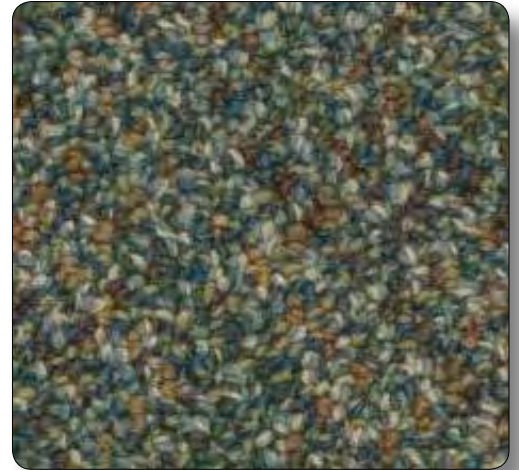
Sparkling Bliss



Divine Flannel



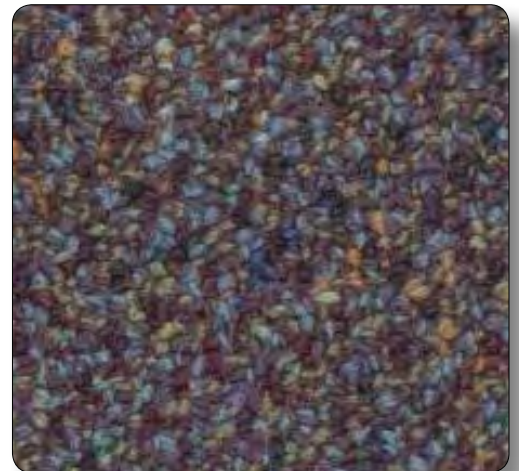
Sweet Spot



Mystic Meadow



Bittersweet Chic



Sultry Nights

The Evolve Collection is available in Broadloom and Modular tile.
The Evolve Collection Modular tile may be installed quarter turned.

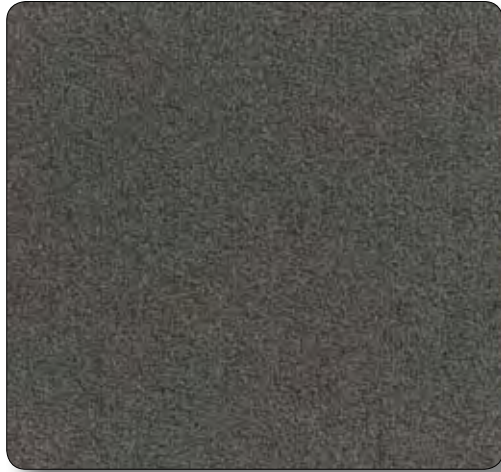
High Performance Office Carpet Carpet Tile + Broadloom



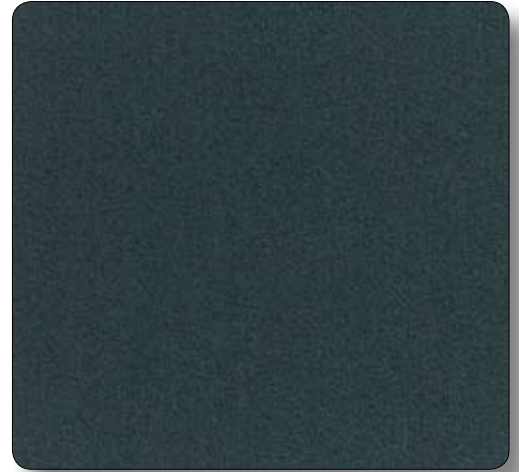
Straw



French Silver



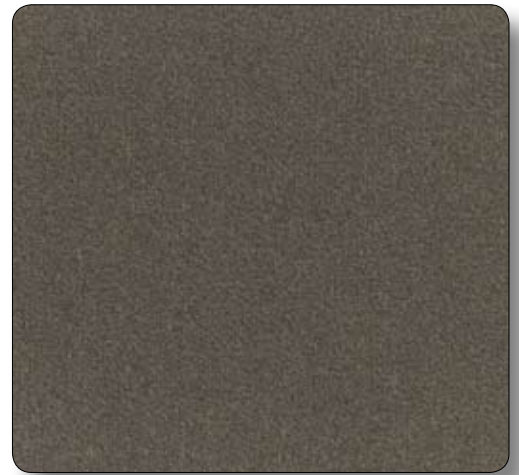
Blue Haze



Sapphire Blue



Driftwood



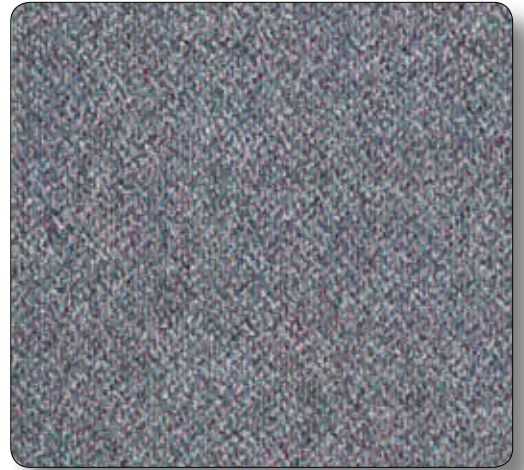
Bird's Eye

The Shade Collection is available in Broadloom and Modular tile.
The Shade Collection Modular tile may be installed quarter turned.

High Performance Office Carpet Carpet Tile + Broadloom



Counterpart



Match



Concurrent



Correspondent



Familiar



Uniform

The Parallel Collection is available in Broadloom and Modular tile.
The Parallel Collection Modular tile may be installed quarter turned.

Ideal For Residential Use Broadloom



Ivory



Stone Washed



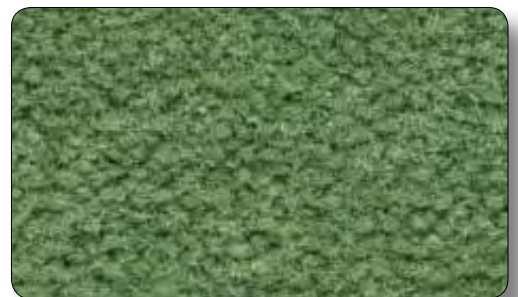
Buttercream



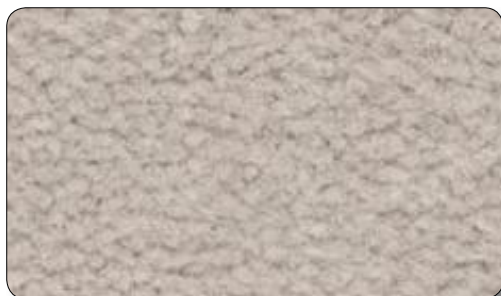
Sprout



Sorbet



Mikado



Blizzard



Cloud



Shown above is Embody collection in Bittersweet Chic in a quarter turned modular tile.



Nova International, Inc.
3401 K Street, NW
Washington, D.C. 20007
tele: 1.202.338.4009
fax: 1.202.338.4138
sales@novainternational.com
www.novainternational.com